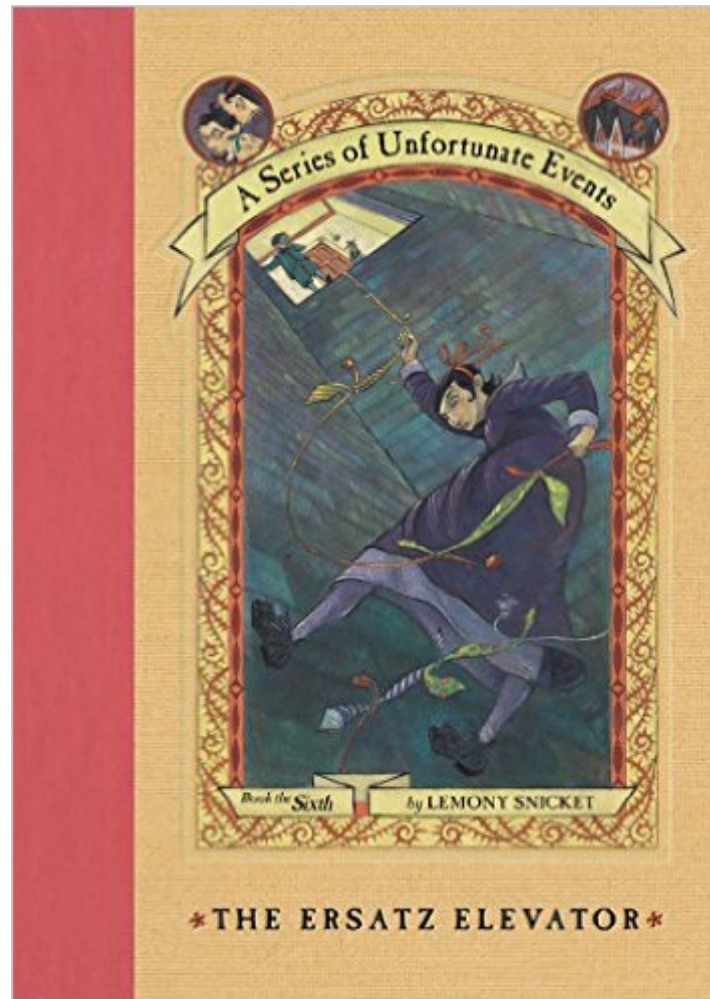


The book was found

# The Ersatz Elevator (A Series Of Unfortunate Events, Book 6)



## Synopsis

In their most daring misadventure, the Baudelaire orphans are adopted by very, very rich people, whose penthouse apartment is located mysteriously close to the place where all their misfortune began. Even though their new home in the city is fancy, and the children are clever and charming, I'm sorry to say that still, the unlucky orphans will encounter more disaster and woe. In fact, in this sixth book in *A Series of Unfortunate Events*, the children will experience a darkened staircase, a red herring, an auction, parsley soda, some friends in a dire situation, a secret passageway, and pinstripe suits. Both literary and irreverent, hilarious and deftly crafted, *A Series of Unfortunate Events* offers an exquisitely dark comedy in the tradition of Edward Gorey and Roald Dahl. *Lemony Snicket's* uproariously unhappy books continue to win readers, despite all his warning. Ages 10+

## Book Information

Lexile Measure: 1110L (What's this?)

Series: *A Series of Unfortunate Events* (Book 6)

Hardcover: 272 pages

Publisher: HarperCollins; 1st edition (February 2001)

Language: English

ISBN-10: 0064408647

ISBN-13: 978-0064408646

Product Dimensions: 5 x 1 x 7 inches

Shipping Weight: 12 ounces (View shipping rates and policies)

Average Customer Review: 4.7 out of 5 stars [See all reviews](#) (305 customer reviews)

Best Sellers Rank: #19,436 in Books (See Top 100 in Books) #60 in [Books > Children's Books > Growing Up & Facts of Life > Family Life > Orphans & Foster Homes](#) #167 in [Books > Children's Books > Growing Up & Facts of Life > Family Life > Siblings](#) #1203 in [Books > Children's Books > Action & Adventure](#)

Age Range: 8 - 12 years

Grade Level: 5 and up

## Customer Reviews

After "The Austere Academy", I wondered whether this series of books could get any better. They can and they did. In "The Ersatz Elevator", the sixth book in this series, the Baudelaire orphans move in with a non-relative in a penthouse apartment. While you might think that a penthouse apartment (which has something like 71 bedrooms) and kitchens, and sitting rooms, and on and on,

would be a lovely place to live, you would be thinking wrong, because this is one of the books in "A Series of Unfortunate Events", and those of you that have read the previous books know that little good comes to pass concerning the Baudelaire orphans. This time the problem is that Esme Squalor (the sixth most important financial advisor in the city) and her husband Jerome are way too hung up on what is "in". Esme must go to only the "in" restaurants; she must wear only "in" clothes, which includes the children, and on and on. Unfortunately, being "in" also means multiple compromises in terms of comfort. For example, the penthouse is on the top of a building with 66 stories, and elevators are "out". So the Squalors and the Baudelaire must walk up and down the 66 stories each time they go in to and out from the building. They certainly received sufficient exercise. Before I forget, orphans are also "in". Of course, we know that Count Olaf must eventually show up, and he does. However, there is a mystery. We find that Count Olaf went up to the apartment and did not later leave the building. Therein lies the crux of the mystery for this story. This story climaxes with the children running briefly into old friends, and then losing them again. They also nearly catch Count Olaf, again. In the end, the children are forced to find a new home once again.

[Download to continue reading...](#)

The Ersatz Elevator (A Series of Unfortunate Events, Book 6) The Miserable Mill (A Series of Unfortunate Events, Book 4) The End (A Series of Unfortunate Events, Book 13) The Reptile Room: Or, Murder! (A Series of Unfortunate Events, Book 2) The Austere Academy (A Series of Unfortunate Events, Book 5) The Penultimate Peril (A Series of Unfortunate Events, Book 12) The Notorious Notations (A Series of Unfortunate Events - Blank Journal) The Complete Wreck (A Series of Unfortunate Events, Books 1-13) A Series of Unfortunate Events #1: The Bad Beginning The Hostile Hospital (A Series of Unfortunate Events #8) The Beatrice Letters (A Series of Unfortunate Events) The Bad Beginning (A Series of Unfortunate Events #1) The Trouble Begins: A Box of Unfortunate Events, Books 1-3 (The Bad Beginning; The Reptile Room; The Wide Window) The Wide Window: Or, Disappearance! (Unfortunate Events) Ersatz in the Confederacy: Shortages and Substitutes on the Southern Homefront (Southern Classics) On the Elevator: Add and Subtract Within 20 (Infomax Common Core Math Readers: Level H) Event Planning: The Ultimate Guide To Successful Meetings, Corporate Events, Fundraising Galas, Conferences, Conventions, Incentives and Other Special Events Risk Management for Meetings and Events (Events Management) Forever: An Unfortunate Fairy Tale Series, Book 5 UnEnchanted: An Unfortunate Fairy Tale Series #

[Dmca](#)